

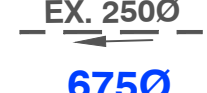

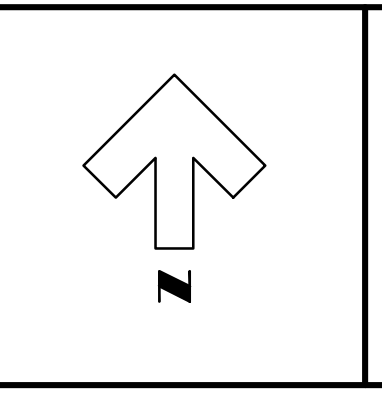
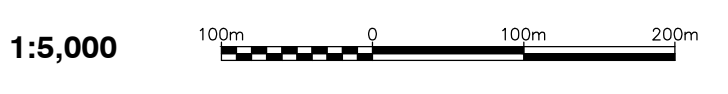


**LEGEND**

-  EXTERNAL DRAINAGE AREAS - FOR THE SNIDER SEWAGE PUMPING STATION
-  FUTURE DEVELOPMENT AREAS
-  EX. 2500  
EXISTING TRUNK SANITARY SEWER AND SIZE
-  6750  
NEW TRUNK SANITARY SEWER AND SIZE



Design By: R.R.R.      Checked By: D.L.E.

No.	DATE	REVISION
1	May 28, 2026	Issued to Client
2	May 28, 2026	Updated as per Client Comments



Goderich    Kincardine    Mount Forest    Sarnia



**Municipality of South Huron (Exeter)**  
**Snider Sewage Pumping Station Catchment Areas**  
 Sanitary Catchment Area Plan for the London Rd South Trunk Sanitary Sewer

**Project No. 25239**

Scale (24x36)  
1 : 5,000

**Figure No. SA-1**

Z:\25239-01-Exeter-London\_Rd\_Snider\_Sewage\_Pumping\_Station\_Catchment\_Areas\25239-Figure 2-Sanitary Catchment Area Plan for the London Rd South Trunk Sanitary Sewer.dwg (R:1/2/26) AM: DWG: 10:07:43, 1/2/26